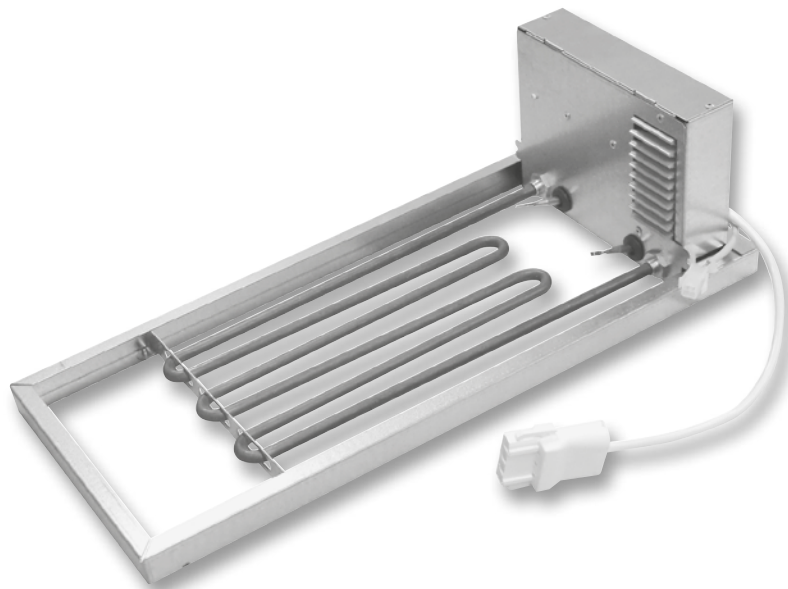


# Swegon **CASA**<sup>®</sup> R120

---

---

## Instructions for installing the reheating cassette

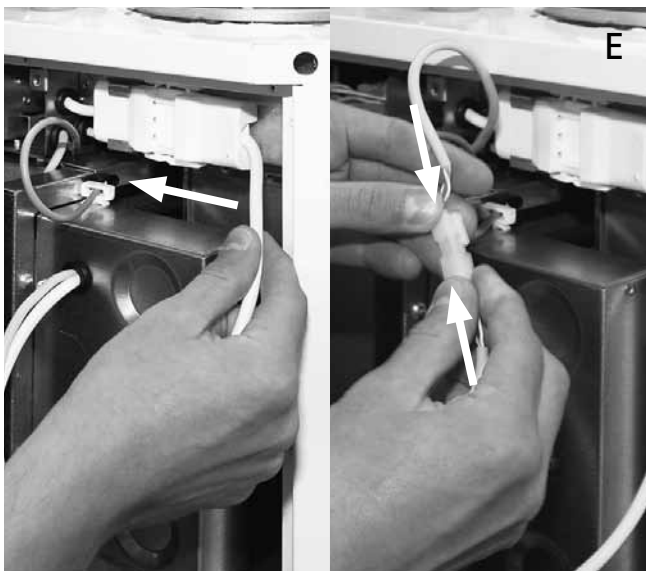
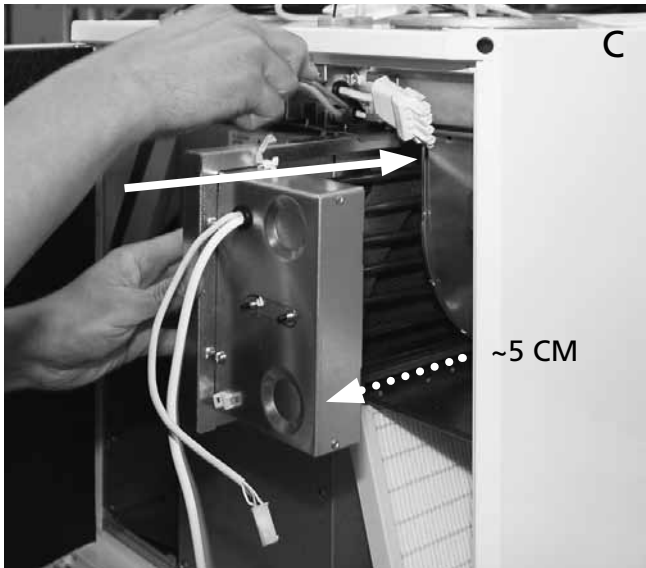
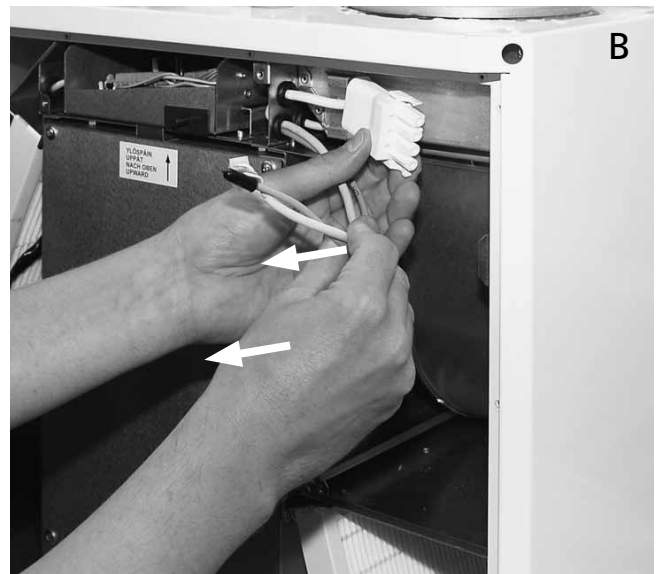


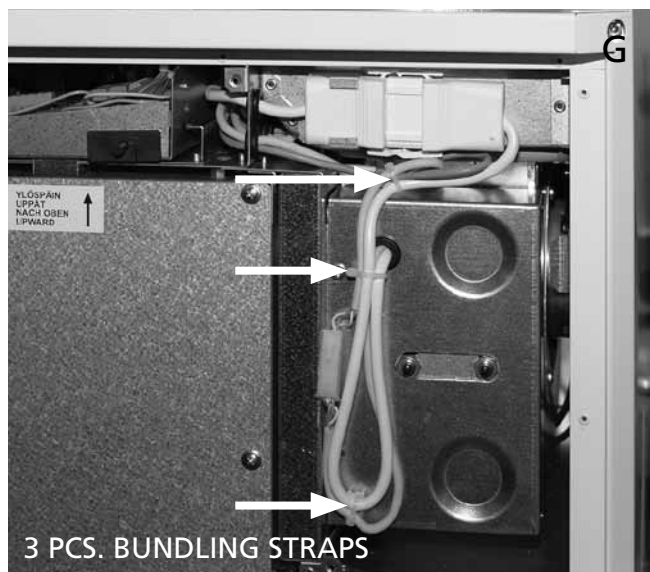
**The installation work must be carried out by a qualified service company only**

### **Installation of reheating cassette in the ventilation unit**

The installation work and commissioning must be carried out by a duly qualified person only. Due to applicable electrical safety regulations, you are not permitted to install the reheating cassette yourself. The ventilation unit warranty will continue to be applicable only if the installation work is carried out by a qualified service technician.

## To install the reheating cassette





## To program the Swegon CASA R120 ventilation unit

After you have connected the reheating cassette, you will have to change the operational settings of the ventilation unit. You can change the parameters from the Premium control panel in the following way:

### To activate the reheating function

- Go from the basic image by pressing the *Menu* button to reach the **Main menu**
- Select **Installation and service** and press *Select*
- Enter the code: 1234, and confirm by pressing the *Set* button
- In the Installation and service menu, select **Functions** and press *Select*
- Select **Heating** and press *Select*
- Select **On** and press the *Set* button
- Leave the menu by pressing the *Return* button an appropriate number of times

### To commission the reheater


- Go from the basic image by pressing the *Menu* button to reach the **Main menu**
- Select **Installation and service** and press *Select*
- Enter the code: 1234, and confirm by pressing the *Set* button
- In the Installation and service menu, select **Air heater** and press *Select*
- Select **Air heater, reheat** and press *Select*
- Select **On** and press the *Set* button
- Leave the menu by pressing the *Return* button an appropriate number of times


### The packaging contains the following items

- Reheating cassette
- 3 small bundling straps

### Tools required for installation

- Crosshead screw driver

 **If the ventilation unit is reset to its original factory settings, you will have to program the unit again as described above.**

 **The installation work, the entering of settings and commissioning should be carried out by qualified personnel only.**

