

Application area

Set point selector with integrated radio transmitter, designed for use in Swegon's indoor climate system WISE.

General

All relevant personnel must acquaint themselves with these instructions before beginning work. Any damages to the product or parts of it due to improper handling cannot be considered subject to warranty if this instruction has not been followed correctly. For further information about the WISE, see the relevant documentation at www.swegon.com

The packaging contains the following items:

- 1 Set point selector WISE RTA
- 2 x Batteries of the type AA Li-ion, 3.6 V (non-rechargeable)
- 1 x Screw TX6 (for locking the front-piece on the back-piece)
- 1 x Instructions for use

Electrical safety

Only a qualified electrician or service personnel trained by Swegon are permitted to carry out any work on the electrical installation or connection of products to the system. Always follow local/national rules for who shall be permitted to carry out this type of electrical installation.

The 24 V isolation transformer must be connected in compliance with IEC 61558-1.

Note the supplied batteries are not rechargeable.

Installation

Check to make sure that the product does not have any visible defects.

Do not block the ventilation openings on the product.

The set point selector should not be exposed to sunlight or draught.

Installed close to a door or middle of the wall, see figure 1.

The front-piece must be stored in its ESD packaging until it is to be mounted.

Mount the back-piece on a wall or in a junction box, see figure 4.

Choose one of the connection options, battery or voltage supply, see figures 2 and 4.

The product is equipped with a digital input for external connection for e.g. key card reader, see figure 4.

Mount the front-piece on the back-piece, see figure 3b.

If necessary use the supplied screw when refitting, see figure 3b.

Check that the product and its cables are properly fitted in place after installation.

Use TuneWISE for commissioning. Commissioning must be performed by qualified and trained WISE service engineers.

Use

The temperature set point value is increased by pressing the up arrow and decreased by pressing the down arrow. The set point value is adjusted 0.5°C per press of the button.

LED, permanent red light: the room has a heating requirement.

LED, permanent blue light: the room has a cooling requirement.

LED, permanent white light: the product is in pairing mode.

Trouble shooting

Make sure that the product is energized. For power fed via cable, check that 24 V is available as set out in the Technical data section. For power fed via the battery, check the polarity of the battery (+/-). Make sure that the glass fuse has not blown.

Cleaning

If necessary, use a dry cloth when cleaning. Never use water, detergent, cleaning solvent or a vacuum cleaner.

Service/maintenance

For power fed via battery, the service interval for battery replacement is calculated to approximately 5 years. This can vary depending on how often temperature adjustments are made. See figure 3a/3b for battery replacement. If you suspect that the product has some defect, please contact Swegon.

Disposal

Must be handled according to local regulations.

Warranty

The warranty or service agreement will not be in effect/will not be extended if: (1) the product is repaired, modified or changed, unless such repair, modification or change has been approved by Swegon AB; or (2) the serial number on the product has been made illegible or is missing.

Technical data

| | |
|--------------------------|--|
| Power supply: | 24 V AC ±10% 50-60 Hz, 15-30 V DC |
| Max. power consumption: | 5 VA |
| Battery: | 2 of the type AA, LiSOCl ₂ of 3.6 V (Li-ion) |
| Glass fuse: | Cartridge Fuses 250V 0.5A Time Lag (Slo-Blow) |
| Cable rating, connector: | Max. 1.5 mm ² , push-in spring force connection |
| External input: | 1 digital (open/close or off/on) |
| Frequency band: | 2.45 GHz, IMS band (2400--2483 MHz) |
| Output (ERP): | 50 mW |
| Range of measurement | |
| Temperature: | 0 – 50°C ± 0.5°C |
| Display: | 3 digits |
| IP class: | IP20 |
| Material: | Front-piece PC, Back-piece: PP |
| Colour: | Front-piece NCS S1002-Y, Back-piece: NCS S5500-N |
| Ambient temperature: | Operating: -20 – + 55°C, Storage: -40 – +80°C |
| RH: | 10 – 95% Non-condensing |
| Weight: | With battery: 142 g, Without battery: 106 g |
| Dimensions: | W90 x H92 x D27 mm |

Declaration of Conformity

Swegon AB hereby declares that the radio equipment WISE RTA conforms with the Directive 2014/53/EU and Directive 2011/65/EU.

The complete EU Declaration of Conformity is available at Swegon's website: www.swegon.com.

This declaration is applicable only if the product has been installed according to the instructions in this document and if no changes have been made on this product.

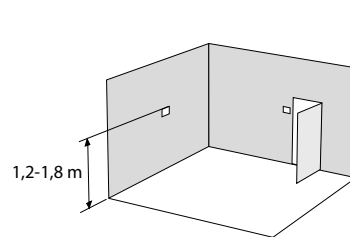


Figure 1. Recommended placement of WISE RTA.

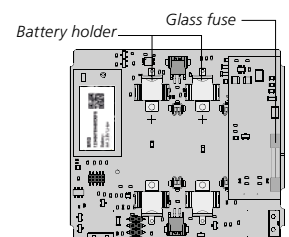


Figure 2. Circuit card.

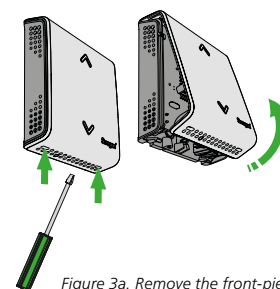


Figure 3a. Remove the front-piece. Always dismantle the product in this direction.

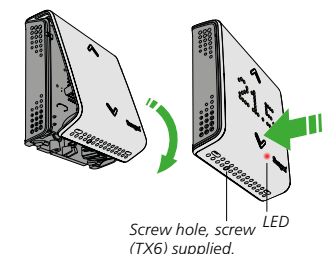


Figure 3b. Fit the front-piece. Always install the product in this direction.

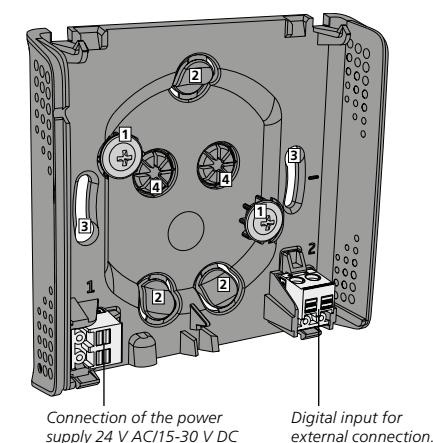


Figure 4. Back-piece

1. Screw mounting on the wall, screw max. Ø4.5 mm, min. length 20 mm, screws not supplied.
2. Knock-outs for cable entry for wall mounting.
3. Hole for mounting in a junction box.
4. Opening for cable entry for mounting in a junction box.

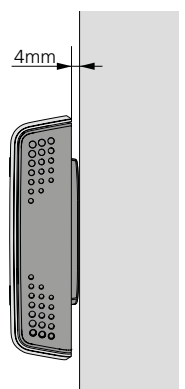


Figure 5. Wall mounting