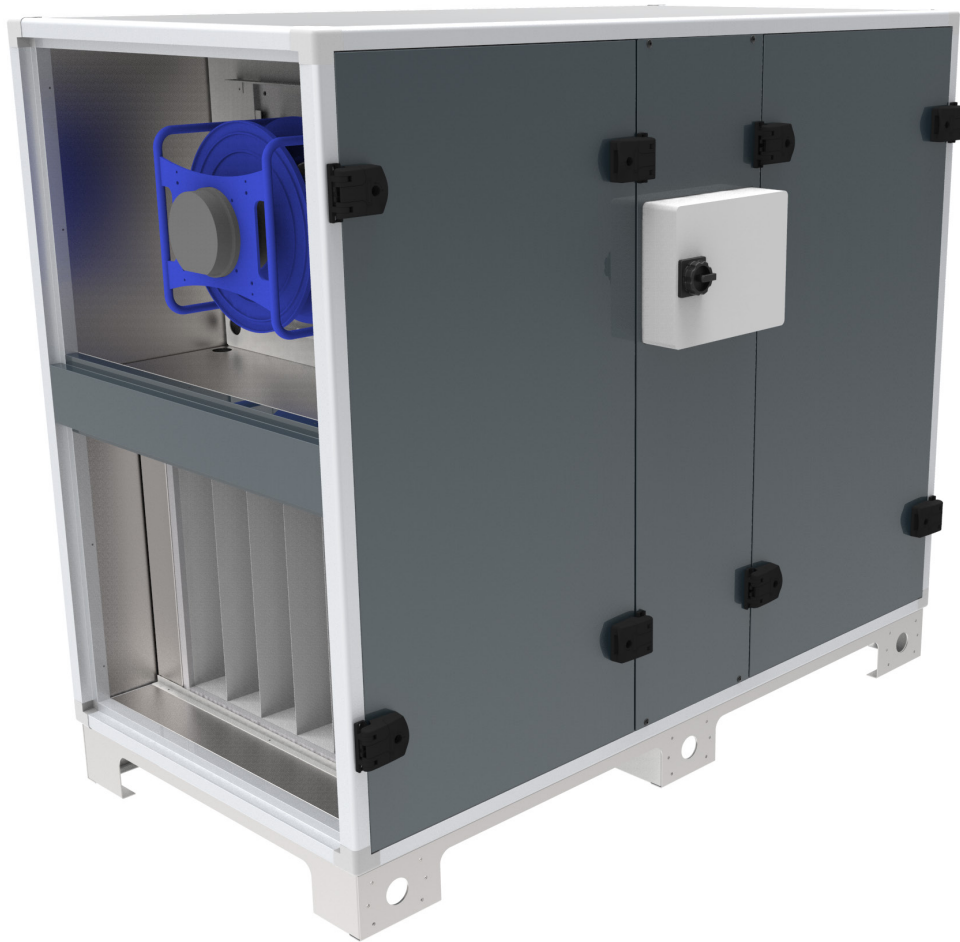


GLOBAL RX

Quick Guide



Overview

GLOBAL RX

Air handling units for small to
medium airflows

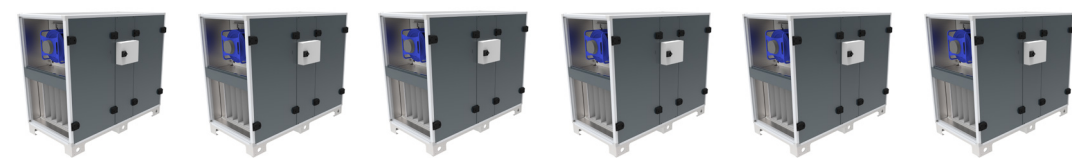
- Standard equipment
- Accessory
- ✕ Not available




	GLOBAL RX 05	GLOBAL RX 08	GLOBAL RX 10	GLOBAL RX 12	GLOBAL RX 13
Nominal air volume	200 -1200 m³/h	200 - 1600 m³/h	250 - 1780 m³/h	300 - 2300 m³/h	300 - 2950 m³/h
	56 - 330 l/s	56 - 445 l/s	69 - 495 l/s	83 - 640 l/s	83 - 820 l/s
Pre filter G4	○	○	○	○	○
Replacement filter kit	510121	510121	510122	510122	510123
Filter type	Bag	Bag	Bag	Bag	Bag
Filter Class EN779 (supply/extract)	F7/ePM2,5 70%	F7/ePM2,5 70%	F7/ePM2,5 70%	F7/ePM2,5 70%	F7/ePM2,5 70%
Filter Class EN16890 (supply/extract)	M5/ePM10 50%	M5/ePM10 50%	M5/ePM10 50%	M5/ePM10 50%	M5/ePM10 50%
Free cooling	●	●	●	●	●
External post heating or cooling (Water/DX)	○	○	○	○	○
Internal post heater	○	○	○	○	○
Post heating capacity 21°C	3.0 kW	3.9 kW	4.0 kW	6.1 kW	7.4 kW
Electrical coil nominal capacity	3.0 kW	4.5 kW	6.0 kW	6.0 kW	7.5 kW
3x400V electrical coil current	4,3A	6,5A	8,7A	8,7A	10,8A
3x230V electrical coil current	7,5A	11,3A	15,1A	15,1A	18,8A
External dampers	○	○	○	○	○
Power connection	1 x 230 V - 50 Hz	1 x 230 V - 50 Hz	1 x 230 V - 50 Hz	1 x 230 V - 50 Hz	1 x 230 V - 50 Hz
Maximum current without accessories (Composite fans)	5.1 A	5.1 A	5.0 A	7.3 A	7.2 A
Fan motor	Variable speed	Variable speed	Variable speed	Variable speed	Variable speed
Heat exchanger STANDARD efficiency D.B. (EN 308)	78%	78%	78%	78%	78%
Heat exchanger PREMIUM efficiency D.B. (EN 308)	81 %	82 %	83 %	81 %	81 %
Casing radiated sound power level (LWA) in dB(A)	51	48	48	50	49
Weight without accessories	305.0 kg	310.0 kg	360.0 kg	340.0 kg	365.0 kg
Standard duct connection (mm)	Ø 315	Ø 315	Ø 400	808 x 583	918 x 583
Slip clamp duct connection (mm)	✕	✕	✕	800 x 600	900 x 600
Circular adapter duct connection (mm)	✕	✕	✕	Ø 400	Ø 400
Unit size (L x W x H) Without slip clamp (H: 75mm)	1530 x 815 x 1315	1530 x 815 x 1315	1680 x 885 x 1465	1680 x 885 x 1465	1680 x 995 x 1465
Article number (CID)					
right/left - Premium efficiency	881524/881525	881526/881527	881528/881529	881530/881531	881532/881533
right/left - Standard efficiency	881500/881501	881502/881503	881504/881505	881506/881507	881508/881509

CONTROLS : All units are equipped with the smart control system TAC5 with optional connectivity by BACNET, Modbus RTU, TCP IP over Ethernet, TCP IP over Wifi, KNX.

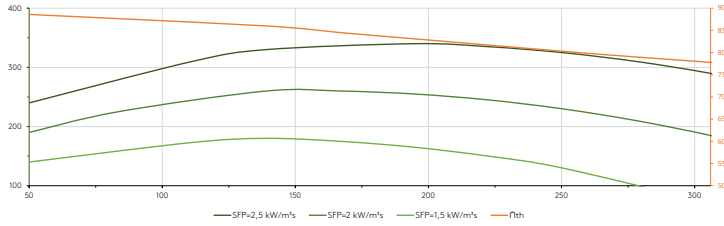
HARDWARE : All units have a casing in RAL 7016 and are insulated with 50mm Rockwool and can be delivered as left or right units. Operating temperatures are from -20°C to +50°C



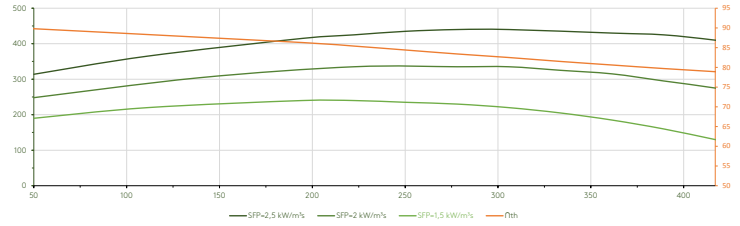
GLOBAL RX 14	GLOBAL RX 16	GLOBAL RX 18	GLOBAL RX 20	GLOBAL RX 24	GLOBAL RX 26	
300 - 3100 m³/h	300 - 3400 m³/h	600 - 4500 m³/h	600 - 5500 m³/h	600 - 6700 m³/h	600 - 7200 m³/h	Nominal air volume
83 - 860 l/s	83 - 945 l/s	167 - 1250 l/s	167 - 1530 l/s	167 - 1860 l/s	167 - 2000 l/s	
○	○	○	○	○	○	Pre filter G4
510124	510124	510125	510125	510126	510126	Replacement filter kit
Bag	Bag	Bag	Bag	Bag	Bag	Filter type
F7/ePM2,5 70%	F7/ePM2,5 70%	F7/ePM2,5 70%	F7/ePM2,5 70%	F7/ePM2,5 70%	F7/ePM2,5 70%	Filter Class EN779 (supply/extract)
M5/ePM10 50%	M5/ePM10 50%	M5/ePM10 50%	M5/ePM10 50%	M5/ePM10 50%	M5/ePM10 50%	Filter Class EN16890 (supply/extract)
●	●	●	●	●	●	Free cooling
○	○	○	○	○	○	External post heating or cooling (Water/DX)
○	○	○	○	○	○	Internal post heater
7.0 kW	7.3 kW	9.5 kW	13.4 kW	15.7 kW	16.2 kW	Post heating capacity 21°C
7.5 kW	9.0 kW	15.0 kW	20.0 kW	22.5 kW	22.5 kW	Electrical coil nominal capacity
10,8A	13,0A	21,7A	26,0A	32,5A	32,5A	3x400V electrical coil current
18,8A	22,6A	×	×	×	×	3x230V electrical coil current
○	○	○	○	○	○	External dampers
1 x 230 V - 50 Hz	1 x 230 V - 50 Hz	3 x 400 V + N - 50 Hz	3 x 400 V + N - 50 Hz	3 x 400 V + N - 50 Hz	3 x 400 V + N - 50 Hz	Power connection
7.5 A	7.8 A	6.3 A	6.7 A	6.5 A	6.7 A	Maximum current without accessories (Composite fans)
Variable speed	Variable speed	Variable speed	Variable speed	Variable speed	Variable speed	Fan motor
78%	78%	78%	78%	78%	78%	Heat exchanger STANDARD efficiency D.B. (EN 308)
83 %	84 %	84 %	82 %	82 %	83 %	Heat exchanger PREMIUM efficiency D.B. (EN 308)
49	50	52	54	56	56	Casing radiated sound power level (LWA) in dB(A)
385.0 kg	395.0 kg	535.0 kg	535.0 kg	575.0 kg	590.0 kg	Weight without accessories
1105 x 583	1105 x 583	1305 x 713	1305 x 713	1563 x 713	1563 x 713	Standard duct connection (mm)
1100 x 600	1100 x 600	1300 x 700	1300 x 700	1600 x 700	1600 x 700	Slip clamp duct connection (mm)
Ø 500	×	×	×	×	×	Circular adapter duct connection (mm)
1680 x 1182 x 1465	1680 x 1182 x 1465	1880 x 1382 x 1725	1880 x 1382 x 1725	1880 x 1640 x 1725	1880 x 1640 x 1725	Unit size (L x W x H) Without slip clamp (H: 75mm)
						
881534/881535	881536/881537	881538/881539	881540/881541	881542/881543	881544/881545	Article number (CID) right/left - Premium efficiency
881510/881511	881512/881513	881514/881515	881516/881517	881518/881519	881520/881521	right/left - Standard efficiency

Selection guide - ERP2018 compliant operating range

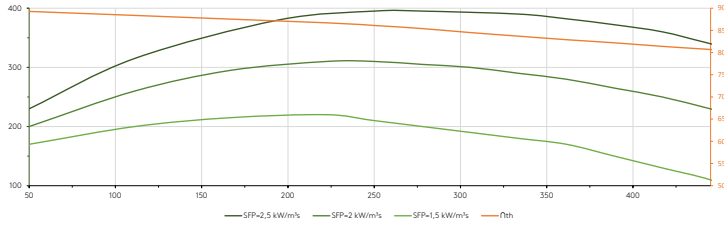
GLOBAL RX 05



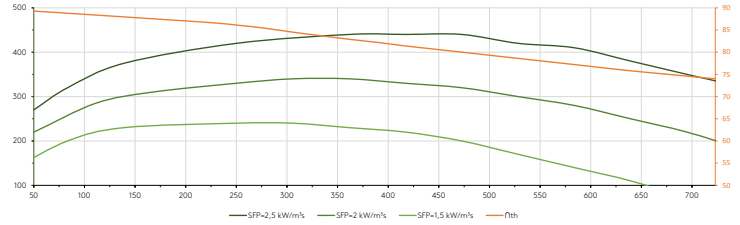
GLOBAL RX 08



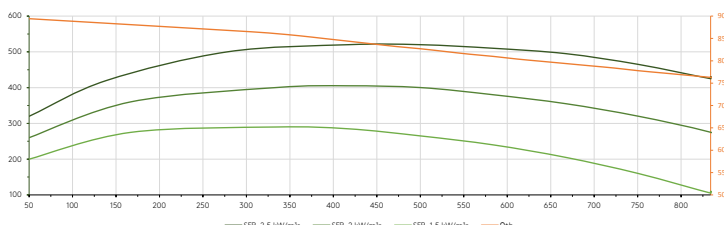
GLOBAL RX 10



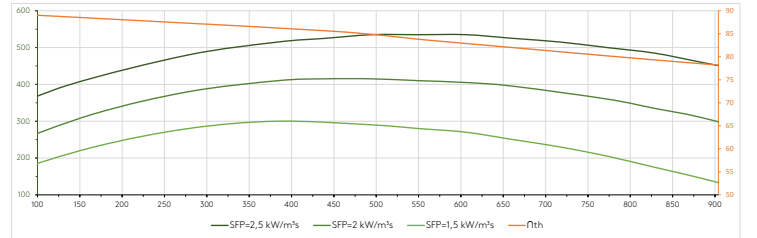
GLOBAL RX 12



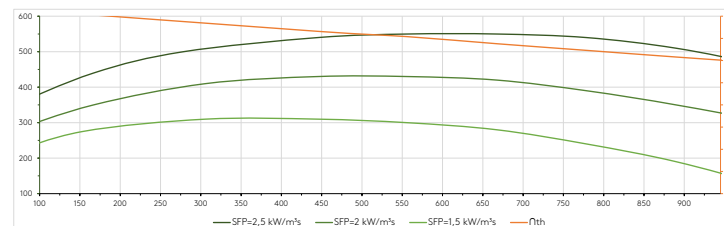
GLOBAL RX 13



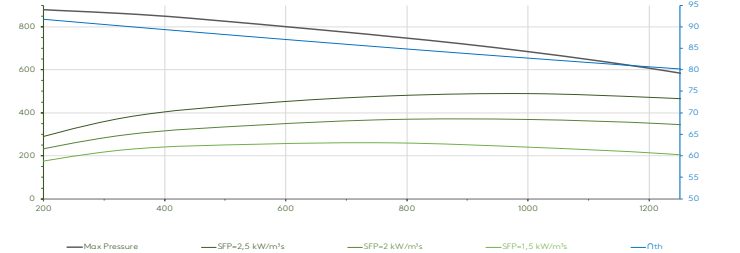
GLOBAL RX 14



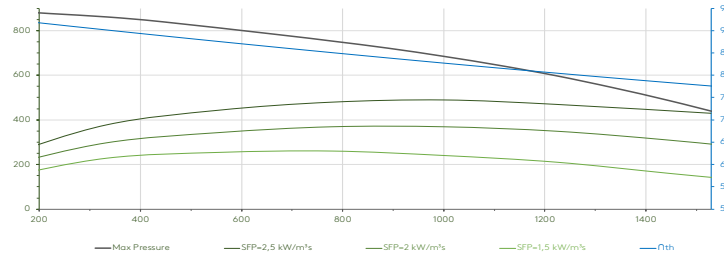
GLOBAL RX 16



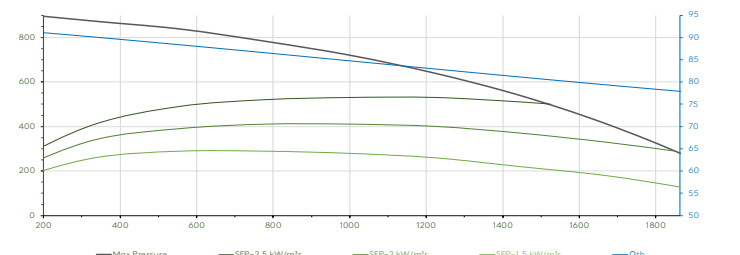
GLOBAL RX 18



GLOBAL RX 20



GLOBAL RX 24



GLOBAL RX 24

