

Installation instructions for the CACZ-2-06 Extract Air Connection Piece, COMPACT 02-03

1. General

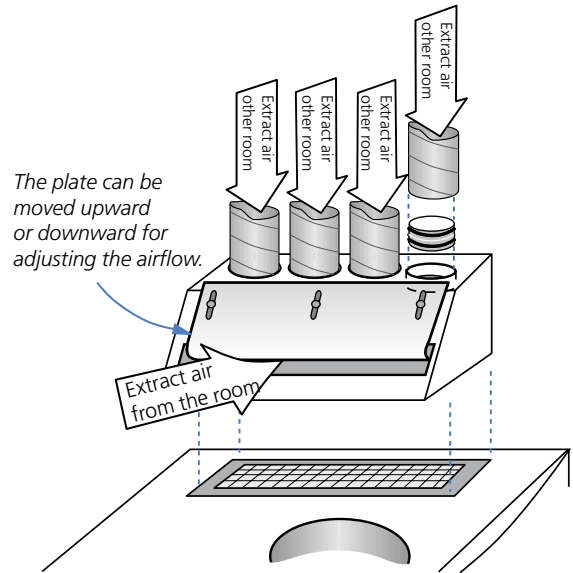
The extract air connection piece is used if it is desirable to ventilate spaces other than the room in which the Compact Air unit is installed, such as pantries, offices or WCs.

The extract air connection piece is made of galvanized sheet steel. It has four 125 mm dia. circular duct connections for extract air from other rooms and a rectangular opening for extract air from the same room where the unit is installed. The rectangular opening is adjustable, making it possible to adjust the airflows.

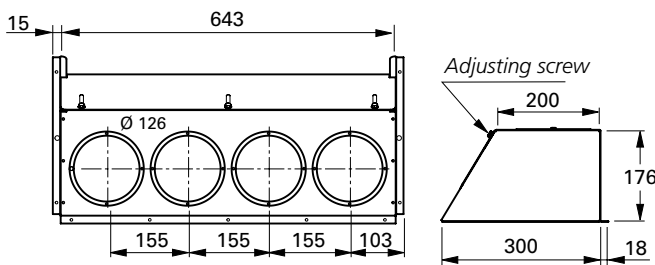
2. Installation

Secure the extract air connection piece by means of self-tapping screws in the upper section of the air handling unit. See the illustration.

125 mm dia. spiral insertion joints are required for connecting spiral ducts. Spiral ducts or insertion joints are not included in the supply. The connections that are not needed should be blanked off by a cover, for instance.



3. Dimensions



The sketch shows that the extract air connection piece with 90° bends does not add more to the installation height than the 90° bends for the unit's spiral connections do.

